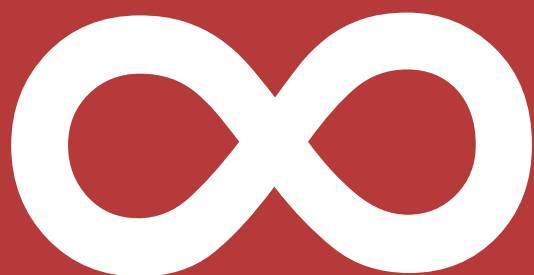


Indulge in the View In All Directions



Happougahara

Viewing
Mountains

Walking

Eating

Playing



<http://happyhappo.net/>
HAPPYHAPPO is also provided in English.
HAPPYHAPPO 繁體中文版, 現已公開。

HAPPY HAPPO Project

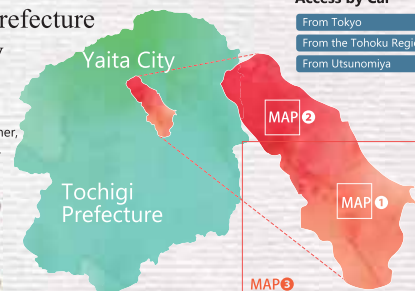
GO OUT IN YAITA MAP



Information on How to Access

Tochigi Prefecture
Yaita City

Azaleas in spring,
Takahara in summer,
apples in autumn.



Access by Car

From Tokyo: Take the Tohoku expressway until the Yaita I.C. / From the Kawaguchi junction it is 121 km (about 1.5 hours).
From the Tohoku Region: Take the Tohoku expressway until the Yaita I.C. / From the Sendai Miyagi I.C. it is about 218 km (about 2.5 hours).
From Utsunomiya: Take Route 4 until the Yaita I.C. on-ramp. / From Utsunomiya City it is about 35 km (about 1 hour).

Nearest Station

JR: JR Utsunomiya Line (Tohoku Line) / Yaita Station, Kataoka Station
Shinkansen: Tohoku Shinkansen Line / Utsunomiya Station, Nasu-Shiobara Station

HAPPY HAPPO Project

Updates about Happougahara and Yaita City from their website and Facebook!

WEB <http://happyhappo.net/>

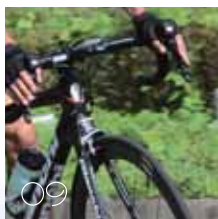
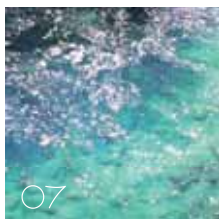
Find us on Facebook: <https://www.facebook.com/HAPPY-HAPPO-Project-1576930479223598>

Yaita City Commerce and Tourism Division

0287-43-6211

This magazine's information was accurate as of its publication in September of 2017. It is possible that the locations and shops have changed hours open, days open, etc. since publication. Contacting them to make sure before visiting is recommended. Public transportation depends on factors such as the season or weather and can be affected by natural disasters. In general this publication's price and fee already includes taxes and other service fees, but it is subject to change, therefore please be careful.
2017 Yaita City / S-4, Honcho, Yaita City, Tochigi Pref. 329-2192 / Tel: 0287-43-1111 (Main) / Fax: 0287-43-2292 (Main)

- 03 Spring in Omama / Yama no Eki "Beautiful Trails"
- 05 Catch up!
- 07 Places for Adults to Relax and Recharge
- 09 Learn from the Mountain Men
"Fun in the Mountains"
- 11 Fall Fun "Yaita Colors and Tastes"
- 13 Soba Restaurants
- 14 Ramen Restaurants



Editor's View

Living here, I have come to value what we have. We have protected what this city has to offer.

Sometimes the things it has to offer are very small but important, sometimes we lost track of what they were originally, sometimes their meanings have been forgotten entirely, but they all have an alluring charm.

The people I really want to tell these things too are the citizens of Yaita City.

If we can't get excited about what's here, then how can we get visitors to be excited? If we are not having fun, then how can we help other people have fun.

A little way away from areas reachable by convenient modes of transportation are spots of real nature, real countryside, and real stunning vistas with hidden locations and hot springs. Let's take one day from our dailylives to go on a Trip to Yaita. Let's go out and let our hearts and bodies be free!

Fully enjoy the spring!

Here is a simple plan for you and your family!

How about lunch under the blooming tsutsuji (azalea) ♪



10:00 AM
Leave central area of Yaita City! Drive through the fresh green leaves.



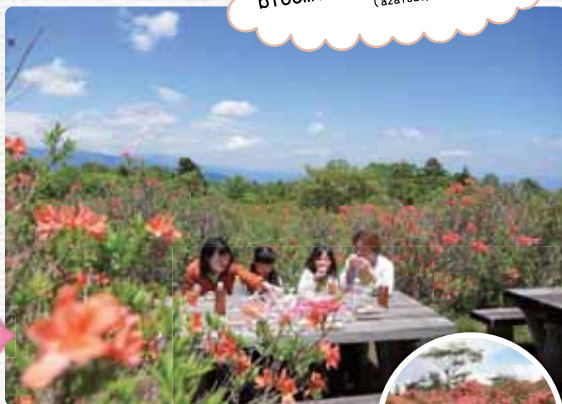
11:00 AM
You can see tsutsuji (azaleas) all around! You're almost there.



11:10 AM
Arrive at Omama Parking Lot! First check out the observatory deck.



11:30 AM
Go for a walk in the surrounding area. It's a little chilly so bring an extra layer.



12:00 PM
Have lunch on the benches along the walking path. Isn't it great eating out in nature under the blooming tsutsuji (azaleas)!



The best time to see the tsutsuji (azalea) blossoms and their condition will depend on the year's weather, temperature, and so forth. For more information, contact the Yaita City Commerce and Tourism Division. ☎0287-43-6211



13:00 PM
Go to Yama-no-Eki Takahara! Have some soft-serve ice cream for dessert!



13:30 PM
Check out the tsutsuji (azaleas) in Gakkodaira and... take a break??

What to eat for lunch?

Bring our own OR try some local food?



Yama-no-Eki Takahara
Zarusoba (cold soba) made from locally grown soba powder, apple curry with lots of apples, and more.

Love Onigirazu
(rice sandwich)



Put down plastic wrap and place seaweed, rice, fillings, and rice again on the top.
Shape it all into a square with the plastic wrap.
Put on a sprinkle pinch of salt.



Michi-no-Eki Yaita
114-1, Yaita, Yaita City
☎0287-43-1000(Main)

Natural Yeast Bakery GRANDIR.
2013-5, Naka, Yaita City
☎0287-44-3030



Yama-no-Eki Takahara MAP

It is crowded with hikers and mountain climbers as there are parking lots, toilets and other equipment. They offer food, souvenirs, and light meals such as soft-serve ice cream, and they have events such as hiking to see tsutsuji (azaleas) in the spring, tour of waterfalls in the summer, BBQs in the fall, and snowshoe hiking in the winter.



The Gakkodaira area's beautiful scenery and safe hiking trails are maintained by volunteers. We really appreciate all of their help.

Yama-no-Eki Takahara
(Gakkodaira Parking Lot / ordinary motor vehicles 55 cars, large vehicles 13 cars.)
991-3, Shimoiyano, Yaita City
☎0287-43-1515

Shiobara Onsen Village

Keep going down route 56 and you will arrive at Shiobara Onsen Village. There are many hotels and leisure facilities where you can relax with family.

For more details please contact the Shiobara Onsen Tourist Association.
747, Shiobara, Nasushibara City
☎0287-32-4000



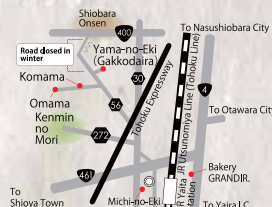
Momijidani Otsuribashi (Suspension Bridge)
This is one of the longest suspension bridges in Japan. Go and take a walk on air!



Yuppo no Sato
This is a footbath of the corridor type with length of 60 m, and it is one of the largest footbath facilities in Japan.



Toteyaki
Is it a meal or a sweet? A new kind of gourmet. There are 13 different kinds



Let's go driving through the beautiful mountainside ♪

It's good for beginning hikers!

Happougahara Omamadai

The elevation of Omama Parking Lot is about 1,200m. You can see the magnificent natural landscape below right after you get out of the car. There is a renga tsutsuji (Japanese azalea) grove here. Because the trees are very short, it is easy to see the whole mountain all the way to the city without interference. A long time ago, there was supposedly a war-horse ranch here. The war-horses ate all of the surrounding vegetation except for the azaleas because they are poisonous. That is why there are so many azaleas.



Omama Parking Lot (Shimoiyano, Yaita City)
☎0287-43-6211 (Yaita City Commerce and Tourism Division)
Ordinary motor vehicles 34 cars, large vehicles 5 cars.
※You are unable to make U-turns in the Omama Parking Lot when there is heavy traffic. Please do not use large buses to get here. (If you do come in large buses please use the Gakkodaira Parking Lot.)

Fully enjoy Happougahara spring time with family.



Spring in Omama

Yama-no-Eki

Beautiful Trails



Right after you get out of the car, there is a beautiful 360° panoramic view.

Sweet and Cute, Happougahara's Flowers

In Happougahara, besides the renga tsutsuji (Japanese azalea) in Omama and Gakkodaira, there are other varieties of plants and flowers such as yashio tsutsuji (yashio azalea), yama tsutsuji (mountain azalea), togokumitsuba tsutsuji (three-leaved eastern azalea), and the cute ko ajisai (small hydrangea).

Bloom Times

	April	May	June
Omama Parking		● (Renga tsutsuji) (End of May)	● (enkiarthus (sakura douan tsutsuji) (End of June))
Komama Parking		● (Yashio tsutsuji) (End of May)	● (Sakura douan tsutsuji (cherry blossom enkiarthus) (End of June))
Yama-no-Eki Takahara area		● (Togokumitsuba tsutsuji) (End of May)	
Kenmin no Mori Administration Office area	● (Katakuri (Japanese family) (Middle of April))	● (Botan zakura (double-flowered cherry blossom) (Beginning of May))	

- Togokumitsuba tsutsuji (three-leaved eastern azalea)
- Yama tsutsuji (mountain azalea)
- Renga tsutsuji (Japanese azalea)
- Shiro yashio (white rhododendron)
- Haru rindo (spring bellflower)
- Ko ajisai (small hydrangea)



The togokumitsuba tsutsuji (three-leaved eastern azalea) is known as "The Komama Queen."

Season's Highlights



The best spot for stargazing!

There are no lights in the Omama Parking Lot making it our recommended spot for skygazing. The star-filled night sky is waiting for you. Please be careful while driving at night!!

- 1 Aka yashio (red rhododendron)
- 2 Ko ajisai (small hydrangea)
- 3 Renga tsutsuji (Japanese azalea)
- 4 Shiro yashio (white rhododendron)
- 5 Yama tsutsuji (mountain azalea)
- 6 Haru rindo (spring bellflower)

Only in summer,
try catching trout
with your hands!



Trout taste great
when you catch them
yourself!

Let's have a little
more fun!

Konseigawa Trout Pond

MAP 0 B-1

Come enjoy the fishing pond and river fish cuisine. Only in summer there is a special pond for catching fish with your hands. Any fish you catch can be salt-grilled or fried up for you! The fish are raised from eggs to adulthood in the fresh cool spring water that comes from the Happougahara Mountains. They hold a different name in Yaita, the "Long Lived Trout."

976, Shimogano, Yaita City
☎0287-43-9292



Tamanyu Bee Farm

MAP 0 B-3
Domestic Honey Specialty Shop

They do beekeeping, harvest and sell domestic honey in Shioya Town of Tochigi Prefecture. Other goods include propolis, royal jelly, and hornets pickled in white liquor.

662, Tamanyu, Shioya Town, Shioya County
☎0287-45-0371



Kenmin no Mori's Forest Exhibition Hall

MAP 0 A-1

It is across from the Kenmin no Mori Administration Office. Watch, listen, and touch at the learning exhibitions in this building.

There is also the Kenmin no Mori Visitor Center full of nature! It is always staff on duty in the daytime, and they are ready to show you around and answer all your questions about the surrounding areas nature. There are many stuffed wild animals and birds on display too!

2927, Nagai, Yaita City ☎0287-43-0479

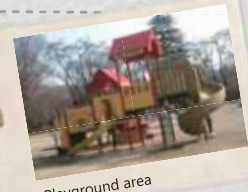
There is also a barbecue
area, camp site and
bungalows!

Nagamine Park

MAP 0

This park was selected as one of Japan's top 100 city parks. Azaleas are the tree of Yaita City and there are about 5,000 here. Come and feel the magic of the flowers. From the beginning of April to the middle of May is the peak of the cherry blossom and azalea season. They are lit up at night during this time. There are also about 100 paper lanterns hung up throughout the park. In the park there is a big grass field and playground equipment making it a great place for family picnics. The best spot for looking at the scenery is known as Symbol Tower. You can see the Takahara mountains and if the weather is good you can see the Nikko mountain range.

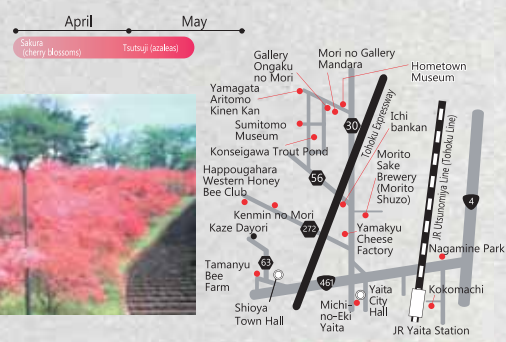
416-1, Naka, Yaita City (Yaita City Commerce and Tourism Division ☎0287-43-6211)



Playground area

Let's go to Nagamine Park!

It is full of cherry blossoms
and azaleas in the spring.



Yaita Brand
73 items
As of September 2017

Tomikawa
Yuzu liqueur made
with sake base.

Hoppo no Tsuki
(Happo's Moon)

Campbell grape juice

Apple honey
Pure honey made
from Yaita City's
apple fields.

Naturally brewed
Ukiyoji Miso.

Goods are made from local
ingredients, such as bread
made from rice powder.

Michi-no-Eki Yaita

MAP 0

Local greengrocer "Shunsen Yaita" has local fresh grown vegetables and Yaita brand products. "Tsuuji Tei" is a farm restaurant with a great menu which is sure to fill you up. The mildly sweet apple soft-serve ice cream is very popular.

114-1, Yaita, Yaita City
☎0287-43-1000(Main)



Apple soft-serve ice cream

The ball pool on the 2nd floor of
Kokomachi is one of the biggest
in the North Kanto area.



Kokomachi

Oniyome fried chicken, mizumoff (waffles and cookies), restaurants, boutiques, and other stores.

19-4, Suehirocho, Yaita City
☎0287-53-7221



Sake tastes
better right
from the brewery!

Morito Shuzo

MAP 0 C-2

(Sake Brewery)
(Jyuichi Masamune Kuramoto)
Not too spicy (+) and not too sweet (-), sake with a good taste you won't get tired of. That is the meaning of this store's name, Jyu (+) Ichi (-). Jyuichi Masamune, Shojinzawa and Takahara are the best sake brands for gifts.

645, Higashizumi, Yaita City
☎0287-43-0411



Mori no Gallery Mandara

MAP 0 C-1

It regularly holds special exhibitions. There is a sculpture garden as well as two differently themed galleries.

709-40, Kamiisano, Yaita City
☎0287-43-9788



Art & Culture

Sumitomo Museum

MAP 0 B-1

The works of the brothers Ogata Korin and Ogata Kenzan are held here. Their autobiographical works are shown in the Rinpa Kan. The Nihon Yoga Kan contains paintings in the Modern Japanese style and Western style.

973-6-1, Shimogano, Yaita City
☎0287-40-0151



Yamagata Aritomo Kinen Kan

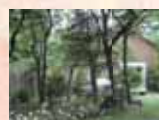
MAP 0 B-1

(General Yamagata Memorial Museum)
The Kokian in Odawara was used by Yamagata Aritomo as a villa home in his later years. It was later relocated here. He was one of Japan's former prime ministers. Tangible Cultural Properties by Tochigi Prefecture (Structures)

1022, Kamiisano, Yaita City ☎0287-44-2320

*Open 10:00 a.m. - 4:00 p.m. Closed on Mondays (If Monday is a national holiday it will be closed the next day.)
*Open weekends and national holidays from January to February.
*Adults 700 yen, elementary school kids 350 yen.
Coffee service included with entrance fee.

Going to both?
Buy a combined ticket!
Adults 1,500 yen,
elementary school kids 700 yen



Gallery Ongaku no Mori

MAP 0 C-1

This gallery produces, plans, and manages exhibitions and concerts for independent artists and musicians.

694-2, Kamiisano, Yaita City
☎0287-43-1820



Kyodo Shiryokan (Hometown Museum)

This museum makes use of the old Kamiisano Elementary School building. It has a permanent exhibit, rotating exhibits, and holds events.

761-2, Kamiisano, Yaita City ☎0287-43-0423



Nostalgic photos from the Taisho period to the Showa period are displayed here.

MAP 0 C-1

RETRO-INSPIRED SHOWA PERIOD CAFE



Cafe restaurant Ichibankan

MAP 0 C-2

This restaurant uses warm lighting to help set the mood and accentuate its Showa period aesthetic. Have an awesome lunch at this old dating spot.

462, Izumi, Yaita City ☎0287-43-3615

Special super thick pasta.

Belgian chocolate gelato

Give it a look see!

Catch up!
Stop by Spot



PEACEFULLY, CALMLY, GO FILL YOUR HEART WITH POWER.

Terayama Kannon Ji (Temple)

A village far in the cedar forest. A deep quiet permeates the air. A building with history and various cultural heritages, the Terayama Kannon Ji. A cool wind passes through the tree filled compound smelling of thick moss. It is said that the Terayama Kannon Ji has seven wonders. The cure for every illness, Reitou (magical onsen). The materials for life; white soil, red soil, green laver... There's more, take your time and look carefully at the Ghost Bench or Osuna Fumi Reijo, you will notice the sound of leaves rustling and realize how serene and silent it is here. In fall the shukaido (hardy begonias) blossom. They are lovely pink flowers that look like the yoraku necklaces on the Kannon statues. That is why they are also called "Yoraku So". Take a trip in the chilly fall to ponder the wonders of Kannon while looking at the shukaido (begonias).



Shukaido (Hardy Begonia) / Around September 20th ~ Beginning of October
Terayama Kannon Ji / 1875, Nagai, Yaita City
☎0287-44-1447

MAP ⑨ B-2



Nagasaka no Ishi Jizo
Along the road approaching the shrine there is a Jizo statue raised up. It was placed there in memory of all those who died from illnesses during the middle of the Edo period. Its hands held together in prayer under a kindly face overflowing with love. The statue was made from Hirano-ishi, tuff gathered from the local fields and it is boasted to be the biggest stone Buddha statue in the city.



There is a 370-year-old icho (gingko) tree that is a designated Tochigi Prefecture natural monument and at the base of it sits the Ghost Bench. It is said that those who have passed away sit on this bench to gather themselves before moving on to meet Kannon the Buddhist deity of mercy.



Osuna Fumi Reijo



Tochigi Prefecture Designated Cultural Property
the Seated Vairocana (Buddha)

Go out with your favorite book and your diary only.
Places to heal your heart.

After seeing the seven wonders of Terayama Kannon Ji, how about visiting the secret hot springs of Yaita. Get away from your smartphone and social networking to take a digital detox at these inns and secret hot springs. Leave your digital devices at your house and even forget about your TV. You can take a bath or meditate...

There is nothing in these out of way the inns, but quiet to help you find your heart and yourself.

How about learning a little bit of Japanese culture on the way back?



MAP ⑨ C-2

Araike Jyutaku (House) (Important Cultural Asset of Japan)



The private house of the village leader that was built during the Edo era in the early Edo period. (Free Tours, Advance Notice Necessary)
192, Tatsushashi, Yaita City
☎0287-43-3247

Wouldn't you like a day without any "likes."

Akataka Kosen (mineral spring)

Lodging / Day Trips MAP ⑨ B-1

It is really close to the city, but you need to take a road only traversable by 4WD to get to this genuine hidden hot spring.

1628-1, Hirano, Yaita City
☎0287-43-0940



One of Terayama Kannon Ji's seven wonders, Reitou is here at the Terayama Kosen.

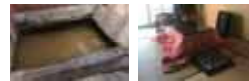


Natural Hot Spring and Organic Vegetable Inn the Terayama Kosen
1922-2, Nagai, Yaita City ☎0287-43-3773

Terayama Kosen (mineral spring)

Lodging / Day Trips MAP ⑨ B-1

This hot-spring resort has been around for over 160 years. Bathing in and drinking the strong waters of this slightly acidic light brown colored iron spring will help improve your vigor and ward off anemia.



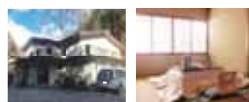
Kotaki Kosen (mineral spring)

Lodging / Day Trips MAP ⑨ B-1

A rugged little journey is the mark of a secret hot spring. In the bottom of a valley sits this one house inn, where the valley and cascades are right in front of you.



Valley Inn and Secret Hot Spring the Kotaki Kosen
1618, Hirano, Yaita City ☎0287-43-0941



Oshiraji Waterfall MAP ⑨



On mornings after rain, when the sun is shining from between the trees onto the deep basin below, you can see the Oshiraji Waterfall sparkling blue. When the conditions are met, the waterfall becomes more beautiful.



Yuhi Waterfall MAP ⑨

PLACES FOR ADULTS TO RELAX AND RECHARGE

ENJOY THE RELAXING SOUNDS OF NATURE. FORGET THE HUSTLE AND BUSTLE ON A TRIP TO YAITA.

Step in and you will find various waterfalls and mysterious scenery.
Listen to the sounds of water and the quiet serenity of the forest while going for a walk.



Aka Waterfall MAP ⑨ B-1



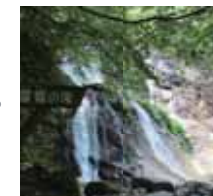
Hoko Waterfall MAP ⑨ Hekireki Waterfall MAP ⑨

Give thanks to the waterfall.

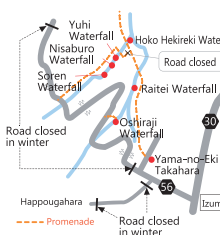
Japanese people have liked waterfalls for a long time. Water is necessary for life, but it can also bring disaster. This double nature of water is what makes it so mysterious. These spots with falling water captivate the minds and souls of people, and help them reflect and meditate linking them with the gods. There is no better way to release the tensions in your heart than going by a waterfall.

Through everyday life we build up positive ions in our bodies. Watching TV, using computers, and any other activities that don't let you exercise your body will fill you up with them. The opposite of that is out in the forest, especially out by waterfalls, there are many minus ions. Go out by one, take a deep breath and relax. Balance out your heart and body with all the minus ions flowing from the light shining on the trees, the water flowing through the ravines, the falling water and spray from the waterfalls.

When you see a waterfall while out walking through the mountains. Put your hands together.
Give thanks to the waterfall.



Raitei Waterfall MAP ⑨



Nature you didn't even know about is right here!

Clear streams, green forests, and wild animals. Experience it all.

Kenmin no Mori Tochigi' s Mori no Tsudoi MAP A-1

Mori no Tsudoi offers various nature experiences that you can only do here. Camping, hiking, and birdwatching are limited to citizens of Tochigi prefecture. There are also experiences like guided hiking or nature crafts. If you wish to participate, please call the Kenmin no Mori Administration Office in advance.

<http://県民の森.tochigi.jp> 2927, Nagai, Yaita City ☎0287-43-0479

Stick Pencils (Nature Craft)

In the next holiday, let's enjoy the fun in the forest for adults.



Easy to join nature crafts, special events for adults, and more!



Tree Climbing with Mori no Tsudoi



Mr. Morihito Shiraishi plans and manages the tree climbing event.



Former salaryman Mr. Masaaki Mizuno turned a new leaf and opened Kaze Dayori.

This log terrace cafe and restaurant has a mini railroad that goes all the way around its perimeter. It even has a car accessible by wheelchair. It has a wide-open area where you can enjoy nature, swings, hammocks, and the giant wooden deck. They use the best ingredients and you can taste it in the food, coffee, and sweets.



Coffee, sweets and their famous omelette rice.



Meet deep in the Takahara Mountains. Mini railroad, original lunch, and sweets.

Barrier Free Railroad Farm Kaze Dayori MAP A-1



Closed Mondays, Tuesdays, and Wednesdays / From being deep in the mountains at an elevation of 750 m the restaurant is sometimes closed because of snow. Checking the webpage and calling before visiting is recommended.

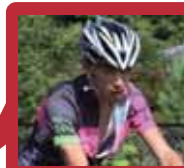
1529-5, Kamiterashima, Shiota Town, Shiota County ☎0287-41-1058



Chari Pro! The unbeatable Tochigi L'Alpe-d'Huez!



The rolling road to Happougahara is filled with amazing nature, it is called the "Tochigi L'Alpe-d'Huez." Many hillclimbers come and try this course. The roads around here are wide but there is low traffic making it a great area for cyclists.



Chari Pro Team Leader Mr. Atsuo Saito

[Happougahara Hillclimb Race] Course distance 13.4 km, difference of elevation 950 m, average gradient 7.1% . The course opens with a steep slope and the middle part of the course goes through the "Green Tunnel." Around the goal area are the Omama tutsuji (azalea) fields. Finish the race with the beautiful Kanto plains in your view. You will have an overflowing sense of accomplishment after finishing the course.

Fans of healthy lifestyles and eco sports who use bicycles are increasing. The Chari Pro members are now city hall workers and they are surveying and researching ways to use bikes more in the city. The Happougahara Hillclimb Race has been held every August since 2014. In 2015 the "cycling" promotional trial tour has opened up to help revitalize the local area.



Happougahara Hillclimb Race, more than 700 people joined from inside and outside of the Tochigi Prefecture.



There is a "bicycle station" at the Yama-no-Eki Takahara, also there are more than 20 "bicycle stations" in Yaita City.

Have fun with the real outdoors and sports.



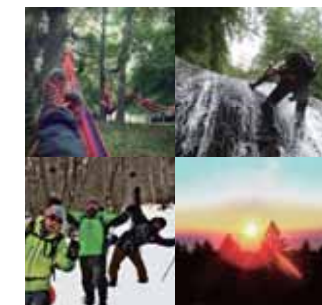
Mr. Kunikazu Urushibara has a passion for managing restaurants and planning outdoor activities.



Omüche Outdoor & Sports CLUB

They plan hiking, special nature hands-on learning events, and tours throughout the year.

In summer they have camping, barbecues, and gorge trekking. In winter they have ice climbing and the Ice Age Experience tour. You can experience the real outdoors without worry. The tours come included with the necessary equipment and guides.



A HAPPY NEW YEAR, the first sunrise on Mt. Takahara.

The clubs theme is "Play. Make. Learn." You can experience the nature and worth of the local area for yourself. Outdoors & Sports CLUB Omüche provides seasonal outdoor experiences in Yaita City. Events and tours can be found on the Omüche homepage at <http://omuche.com>



Enjoy Walking Around Freely in the Wide-Open Spaces While Apple Picking

Okamoto Apple Orchard

Walk around the orchards with no time limit while eating the apples that you pick (only available on the Slow and Relaxing All You Can Eat Course.) Even in Yaita this is an unusually styled apple orchard.

Okamoto Apple Orchard / 777, Naka, Yaita City
☎0287-44-1690

Develops Lots of Apples and Apple Products

Kato Orchard

Mt. Takahara is behind the wide-open area of the apple orchard, and in front is where Kato Orchard sell all of their goods. Apple butter, various jams that they developed themselves, and apples they have harvested. A lot of people come to visit and buy their apples. You can also find their products at the Michi-no-Eki Yaita.

Kato Orchard / 1333, Nagai, Yaita City
☎0287-43-1177



Go to the orchards,
find out about them,
and become an
“Apple Connoisseur!”

Always Studying, Always Challenging

Ikuo Tetsuka Orchard

The orchard uses compost and not chemical fertilizers. Trying out various materials for compost such as rice bran, and putting it around the saplings for study and research is their main policy. The apples taste will change based on what's used. Their style is to "Just Try!" Right now they are looking into nectared apples. Their aim is to make the apples even tastier.

Ikuo Tetsuka Orchard / 952, Nagai, Yaita City ☎0287-43-8550

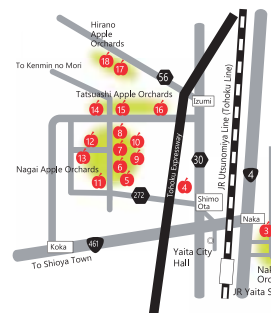


Sorbitol from a nectared apple is about 60% as sweet as sugar. It has a gentle sweetness.

About Apple's Nectar

If you hear the word nectar, you think of sweet things like honey, but apple nectar has sorbitol. When the fruit ripens and sorbitol accumulates on the meat of the apple it is a nectared apple. Sorbitol is used as a sweetener for diabetics.

Yaita Apple Orchards Map



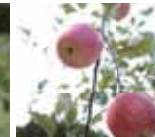
- 1 Sadao Tatewaki Orchard
- 2 Masakazu Okamoto Orchard
- 3 Kenji Suzuki Orchard
- 4 Hakuo Takahashi Orchard
- 5 Hirohisa Tetsuka Orchard
- 6 Sachifumi Watanabe Orchard
- 7 Masao Saito Orchard
- 8 Ikuo Tetsuka Orchard
- 9 Mikio Tezuka Orchard
- 10 Ryuji Tetsuka Orchard
- 11 Hisayuki Ogawa Orchard
- 12 Takayoshi Arai Orchard
- 13 Toshio Watanabe Orchard
- 14 Takaju Kato Orchard
- 15 Takeshi Tetsuka Orchard
- 16 Ikuo Arai Orchard
- 17 Nobuhiro Innami Orchard
- 18 Sueo Shiraishi Orchard

Appreciation for Apple Trees

Watanabe Apple Orchard

This farm uses compost to fertilize their apples and not chemical fertilizers. They raise their young trees like old trees, and old trees like young trees. It is said that apple trees grow delicious fruit so that they will have descendants. The workers appreciate this and do their best to take care of the trees every day. This farm hangs plastic bottles with juice in them to catch bugs.

Watanabe Apple Orchard
910, Nagai, Yaita City ☎0287-43-8552



The beautiful fall colors reflecting off of the Happo Lake surface.
And the main taste of fall in Yaita, Apples!
There are many apple orchards in Yaita and they all grow their apples with a passion. Each farm has their own style and way to enjoy apple picking, please feel free to talk to the owners about their passions!

Types of Apples and When They Ripen

October	November
Aki Bae Good balance of sweet and sour with a rich taste. Even after it ripens it keeps for a long time. This is a new kind of apple.	
Shinano Sweet Juicy and sweet with a rich flavor.	
Jonagold Extremely rich taste, very sweet and the right amount sour.	
Kogyoku Sour and rich with a honeyed core when ripened. Good for cooking.	
Yoko Beautifully shaped. Not so sour with a sweet and rich taste.	
	Orin Refreshing green apples that are just sweet enough.
	Gyuma Meigetsu Meaty and very sweet with just the right amount of sour mixed in.
Good balance of sweet and sour with the perfect flavor.	Fuji It is the king of apples.

Information

Apple Picking Period: Beginning of October to End of November

Entrance Fee: From 300 yen

Price: About 500 yen per 1 kg.

(Prices depend on the farm and period.)

Ramen

Ajiichiban

Suratanmen (Sour and Spicy Ramen) 750 yen

MAP D-3

Ad 2-1-27, Ogicho, Yaita City
☎ 0287-43-0012
Ho 11:00 a.m. - 2:00 p.m.
5:00 p.m. - 7:45 p.m.
C Second, Fourth, and Fifth Sunday of the Month

Kashin

Ebi (Shrimp) Ramen 615 yen

MAP D-3

Ad 876-1, Naka, Yaita City
☎ 0287-44-2557
Ho 11:30 a.m. - 9:00 p.m.
C Irregular

Chinraku

Teuchi Rashimen (Handmade noodles in miso broth) 650 yen

MAP D-3

Ad 12-25, Honcho, Yaita City
☎ 0287-43-0668
Ho 11:00 a.m. - 2:30 p.m.
5:00 p.m. - 7:30 p.m.
C Irregular

Taiwan Food Entenka

Taiwan Ramen 480 yen

MAP D-3

Ad 9-21, Honcho, Yaita City
☎ 0287-40-0688
Ho 11:00 a.m. - 2:30 p.m.
5:00 p.m. - 11:30 p.m.
C Second and Fourth Tuesday of the Month

Handmade Chinese Food Takizawa

Tokusei Teuchi Chuka (Special Handmade Ramen) 900 yen

MAP C-3

Ad 642-1, Sakabayashi, Yaita City
☎ 0287-48-1517
Ho 11:00 a.m. - 2:30 p.m.
(Closes when all the soup is finished.)
C Thursdays and Fridays
(Open if they are national holidays.)

Chinman

Shisen Ramen (Miso broth made with chili peppers and otherspices) 750 yen

MAP D-3

Ad 5-7, Honcho, Yaita City
☎ 0287-44-0743
Ho 11:00 a.m. - 2:00 p.m.
5:00 p.m. - 8:00 p.m.
C Mondays

Tonton Tei

Tonton Men (Ramen) 700 yen

MAP C-2

Ad 97, Shimo Ota, Yaita City
☎ 0287-43-0703
Ho 11 a.m. - 8:00 p.m.
C Mondays

Chuka Minmin

Tantan Men (Chinese Noodles in a Spicy Soup) 648 yen

MAP C-4

Ad 2088-5, Kataoka, Yaita City
☎ 0287-48-4188
Ho 11:30 a.m. - 8:00 p.m.
C Tuesdays

Ichi daigen

Shio Yasai Ramen (Vegetable Ramen in a Salt Broth) 650 yen

MAP D-3

Ad 2006-4, Naka, Yaita City
☎ 0287-46-6363
Ho 11:00 a.m. - 2:00 a.m.
(1:30 a.m. LO)
C No holidays

Kumasan no Mura

Ramen 600 yen

MAP B-1

Ad 973, Shimoisano, Yaita City
☎ 090-3237-2437
Ho 10:00 a.m. - 3:00 p.m.
C Wednesdays

Bika Restaurant

Tan Men (Stir-fried Meat and Vegetable Ramen) 650 yen

MAP D-3

Ad 1-14-25, Ogicho, Yaita City
☎ 0287-43-1581
Ho 10:30 a.m. - 2:00 p.m.
5:00 p.m. - 8:00 p.m.
C Sundays

Men maru

Miso Ramen 648 yen

MAP D-3

Ad 157-7, Naka, Yaita City
☎ 0287-44-3232
Ho 11:00 a.m. - 12:00 a.m. LO
C No Holidays
(Friday and Saturday 12:30 a.m. LO)

Maruya

Maruya Ramen 1,080 yen

MAP C-4

Ad 1170, Kataoka, Yaita City
☎ 0287-48-3084
Ho 11:00 a.m. - 2:00 p.m. 5:00 p.m. - 8:30 p.m.
C Wednesday Afternoons

Soba

MAP B-1

Juwarisoba Ikkyu

Tenmori (Tempura with Soba) 1,050 yen

Ad 1204-2, Hirano, Yaita City
☎ 0287-43-9447
Ho 11:00 a.m. - 3:00 p.m.
(The store will close when all of the food is finished.)
C Tuesdays
(Open on national holidays.)

MAP C-2

Restaurant Kawashimaya

Butajiru Tsukusoba (Dipping Soba with Pork Soup) 700 yen

Ad 11-2, Izumi, Yaita City
☎ 0287-43-0186
Ho 11:00 a.m. - 8:00 p.m.
C Mondays
(If Monday is a national holiday, it is closed the next day.)

MAP D-3

Yama-no-Eki Takahara

Tenzaru (Tempura and Soba)

Ad 991-3, Shimoisano, Yaita City
☎ 0287-43-1515
Ho 9:00 a.m. - 4:00 p.m. (April to November)
10:00 a.m. - 3:00 p.m. (December to March)
C Wednesdays
(Only open Fridays, Saturdays, Sundays and national holidays from December to March.)

Soba Sarashina

MAP D-3 Tenzaru Soba (Dipping Soba with Tempura) 1,250 yen

Ad 3-13, Kamicho, Yaita City
☎ 0287-43-0712
Ho 11:00 a.m. - 8:00 p.m.
C Irregular Holidays

Tashiro Tei

MAP D-3 Daikon Oroshi Soba (Grated Japanese Radish Soba) 1,080 yen

Ad 1529-4, Kibata, Yaita City
☎ 0287-43-3879
Ho 11:00 a.m. - 8:00 p.m.
C No Holidays

Muryoan

MAP D-4 Mugitororo (Sticky Potato Paste on Wheat Rice) and Soba Set

Ad 2215-1, Kataoka, Yaita City
☎ 0287-48-2123
Ho 11:00 a.m. - 2:30 p.m.
5:30 p.m. - 7:30 p.m.
C Thursdays and Wednesday Nights

Mitsuwa

MAP D-3 Hiyashi Kakiage Soba (Soba with Tempura on Top) 650 yen

Ad 1-8-3, Ogicho, Yaita City
☎ 0287-43-0213
Ho 11:00 a.m. - 2:30 p.m.
5:00 p.m. - 7:30 p.m.
C Sundays

Dattan Soba Juan

MAP D-4 Yaku Zen Dattan (Bitter Buckwheat) Course

Ad 1746-19, Otsuhata, Yaita City
☎ 0287-48-1426
Ho 11:30 a.m. - 2:30 p.m.
5:00 p.m. - 7:30 p.m.
C Thursdays

Tomonari Soba Dokoro Shinsyoan

MAP C-3 Tomonari Special 1,600 yen

Ad 59-160, Kawasaki Sorinmachi, Yaita City
☎ 0287-43-4466
Ho 11:00 a.m. - 3:00 p.m. (LO 2:30 p.m.)
C No Holidays

Michi-no-Eki Yaita Nosen Restaurant Tsutsuji Tei

MAP D-3 Uchikawa Soba 620 yen

Ad 114-1, Yaita, Yaita City
☎ 0287-40-0978
Ho 11:00 a.m. - 4:00 p.m.
C Irregular Wednesdays

Sobazen Asahi

MAP D-3 Ten Seiro (Tempura and Soba) 1,550 yen

Ad 58-5, Tomita, Yaita City
☎ 0287-44-1196
Ho 11:00 a.m. - 9:00 p.m.
C Thursdays and every 3rd Wednesday from 3:00 p.m.~

Fujiya Restaurant

MAP D-3 Ohiyashi (Cold) Soba 650 yen

Ad 7-13, Honcho, Yaita City
☎ 0287-43-1315
Ho 11:00 a.m. - 2:00 p.m.
C Sundays

Sobadokoro Temmori

MAP D-3 Tsukemen (Dipping) Soba Curry 950 yen

Ad 1-17-46, Ogicho, Yaita City
☎ 0287-44-2252
Ho 11:00 a.m. - 2:15 p.m.
5:00 p.m. - 8:30 p.m.
C Saturdays

Soba Yuzen Miyabi

MAP B-2

Ten Seiro (Tempura and Soba)
Ad 922-11, Kurakake, Yaita City
☎ 0287-40-1486
Ho 11:30 a.m. - 8:00 p.m.
C Wednesdays
(Open if it's a national holiday.)

Handmade Soba Akiba

MAP D-3 Mori Tendon Teishoku (Tempura on Rice and Soba on the Side) 1,000 yen

Ad 472-7, Naka, Yaita City
☎ 0287-43-3026
Ho 11:00 a.m. - 1:30 p.m.
C Sundays

